



Prescott, AZ

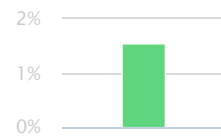
Community Profile

TOTAL POPULATION 40,644

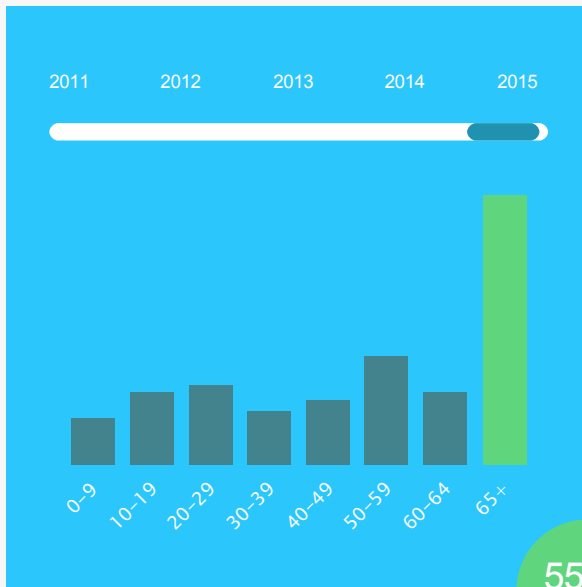
The total population of the City of Prescott is 40,644. The median age is 55.32.



The population in Prescott has grown 1.55% since 2011.



Age Distribution



49.07%
Male



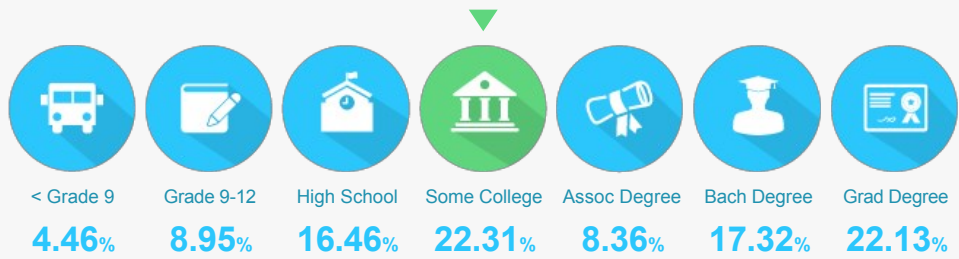
50.93%
Female



55.32
Median Age

EDUCATIONAL ATTAINMENT

The majority of the population in Prescott has completed at least some college.



47.81%
of the population
has a college degree.



offer Associate's Degree
or Certificate



offer Bachelor's Degree
or Higher

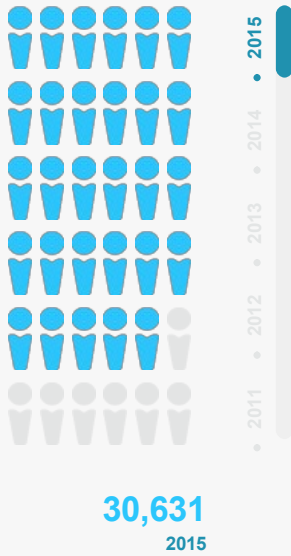
LABOR FORCE 16,854

Prescott has a labor force of 16,854 people, with a job growth rate of -1.63% since 2011, and an unemployment rate of 6.6%.

JOB GROWTH

-1.63%

TOTAL EMPLOYEES



6.6%

Unemployment Rate

-7%

Since 2014

5 TOP TALENT

Where are the top jobs by occupation?

Office and Administrative support



16.81%

5,149

Food Preparation/Serving



5.59%

1,713

Executive, Managers, and Administrators



9.06%

2,774

Health Diagnosing and Treating Practitioners



6.03%

1,848

Sales



11.59%

3,551

The work distribution of total employees in Prescott is.



65%

Blue Collar



34%

White Collar

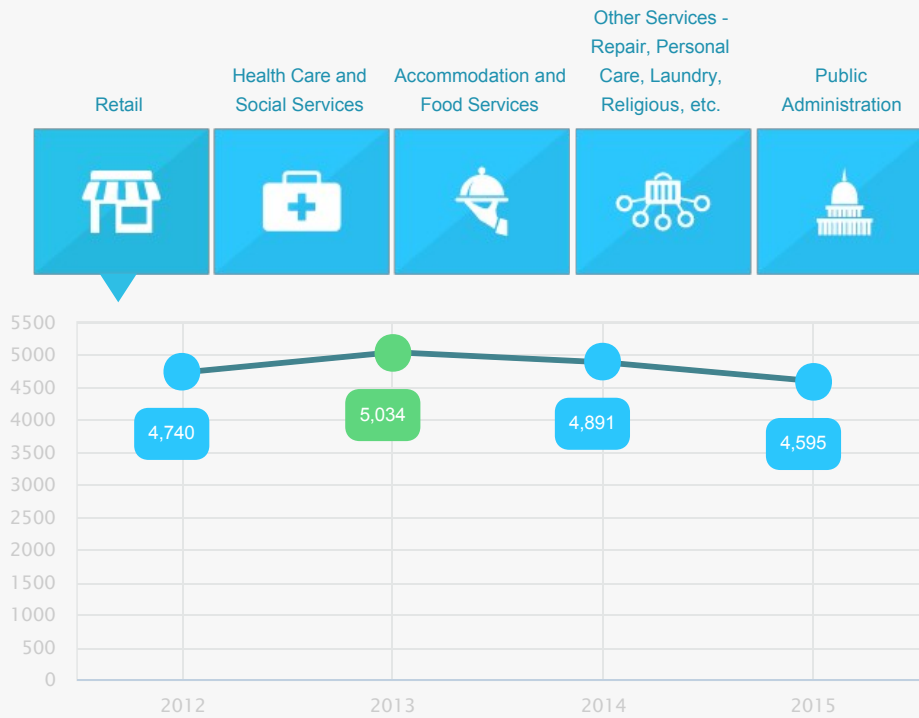
TOTAL ESTABLISHMENTS
3,341

BUSINESSES AND JOBS

Prescott has a total of 3,341 businesses. In 2015, the leading industries were:

Retail, Health Care and Social Services, Accommodation and Food Services, Other Services - Repair, Personal Care, Laundry, Religious, etc., and Public Administration

Which are the top 5 industries by jobs?



How many employees do businesses in Prescott have?



1-4 Employees	66.21%
5-9 Employees	17.54%
10-19 Employees	8.2%
20-49 Employees	5%
50-99 Employees	1.71%

INCOME AND SPENDING

Workers in Prescott earn an average yearly household income of \$43,834. 33.75% of the households earn more than the national average each year. Household expenditures average \$49,111 per year. The majority of earnings get spent on Shelter, Transportation, Food and Beverages, Health Care, and Utilities.

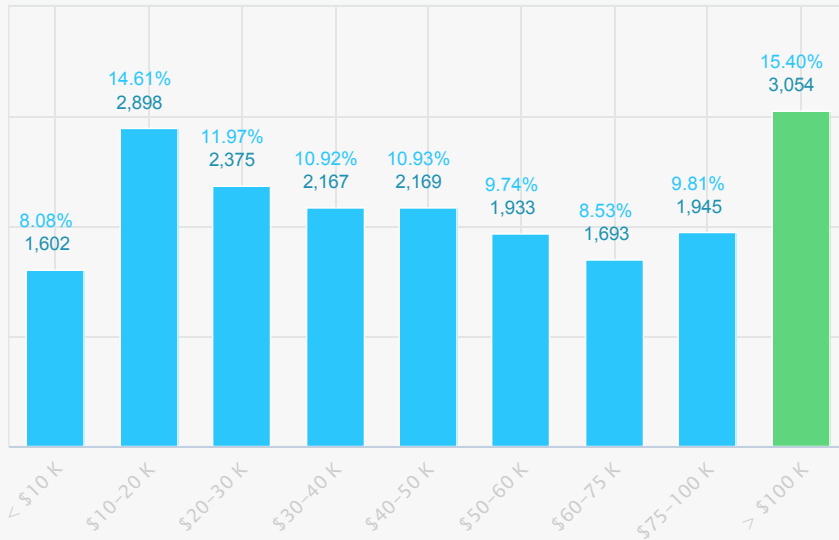
There are 85% more households who own their homes than there are renters.



MEDIAN
**HOUSEHOLD
INCOME**
\$43,834

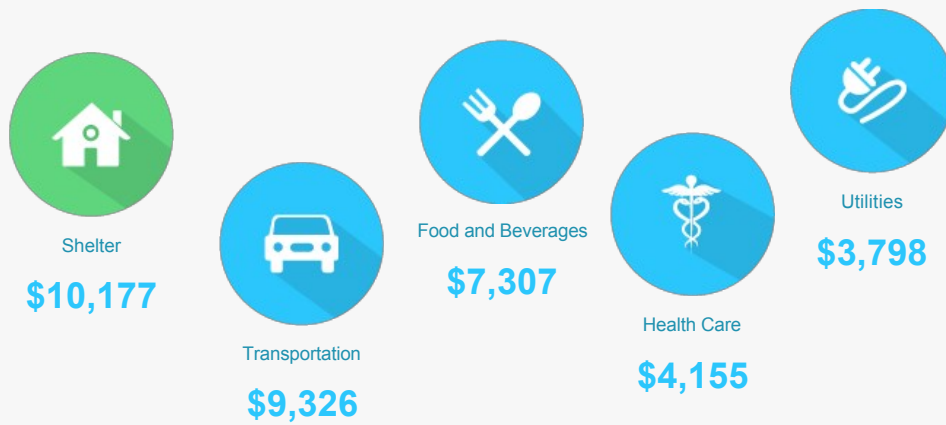
2% more than the county
10% less than the state
20% less than the nation

Income Distribution



How do people spend much of their money?

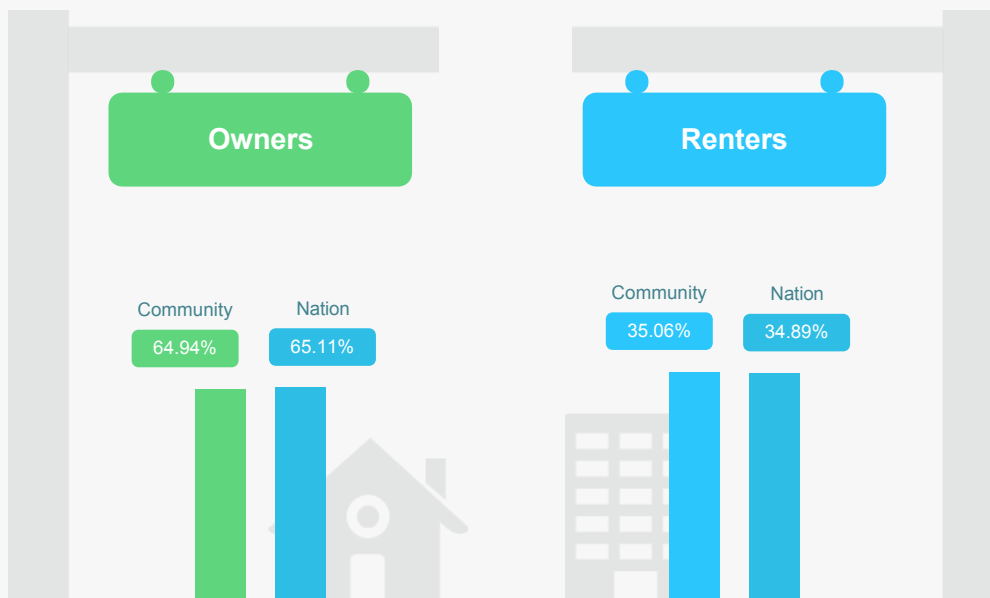
\$ PER HOUSEHOLD



The average household expenditure in Prescott is:

\$49,111

HOUSING



TRANSPORTATION

Residents spend an average of 17 minutes commuting to work. Prescott is served by 6 airports within 50 miles. Rail can be accessed within 6 miles. Interstates can be accessed 19 miles away.



17 min.

Commute Travel Time

19 miles

Distance to Interstate



1

Airports in Community

6

Airports in Community (+50 miles)



6 miles

Distance to Freight Rail